

## Red Mountain Mining Site



Ore Dumps on south slopes of Red Mountain 2014

### Heritage Register - Site

- 1) **Historical Name:** Red Mountain Mining Site
- 2) **Common Name:**
- 3) **Location:** Museum – 1100 Highway 3B
- 4) **Date of Construction:** 1890 first claims

### STATEMENT OF SIGNIFICANCE

#### Description:

The Le Roi Mine is a drilled and blasted hardrock gold mine. The mineral rights claim was staked in 1890 and ore was extracted until all mining production ceased in 1929. The Le Roi mine is located on the site of the Rossland Museum and Discovery Centre complex at the junction of Columbia Avenue and Highway 3B.

The horizontal passage from the surface into the mine is known as the Le Roi Mine Adit, or the Le Roi 300 Adit of the Black Bear Tunnel. Of the 128 kilometres of hand drilled and blasted workings, the boundaries of interest extend from the entry portal to various points of interest within a 1000 foot radius of the entry.

**Heritage Value:**

The discovery of gold and copper deposits in 1890 was the most important event in the history of the Greater Trail area. The rich deposits of the Le Roi mine sparked the Kootenay gold rush that saw Rossland become the premier mining centre of North America. British and American investment fostered the infrastructure and miners settled the new towns of Rossland and Trail. By 1897, Rossland was the largest city in the BC Interior boasting 42 saloons, 4 banks, 17 law firms and a population of 7,000.

Underground hardrock gold mining was a new technique requiring massive volumes of ore to be transported to the United States for processing. Railway infrastructures were created to transport the ore, and a small, technologically advanced smelter was setup at Trail Creek (now Trail) to reduce transportation costs. Over the years, the small smelter grew into one of the world's largest metallurgical complexes, as well as one of the regions largest employers. A power company was formed to supply the mines with electrical energy, and in doing so created the world's longest and highest voltage transmission line at the time. The company is now British Columbia's oldest utility company and provides power to customers in the Kootenay and Okanagan regions.

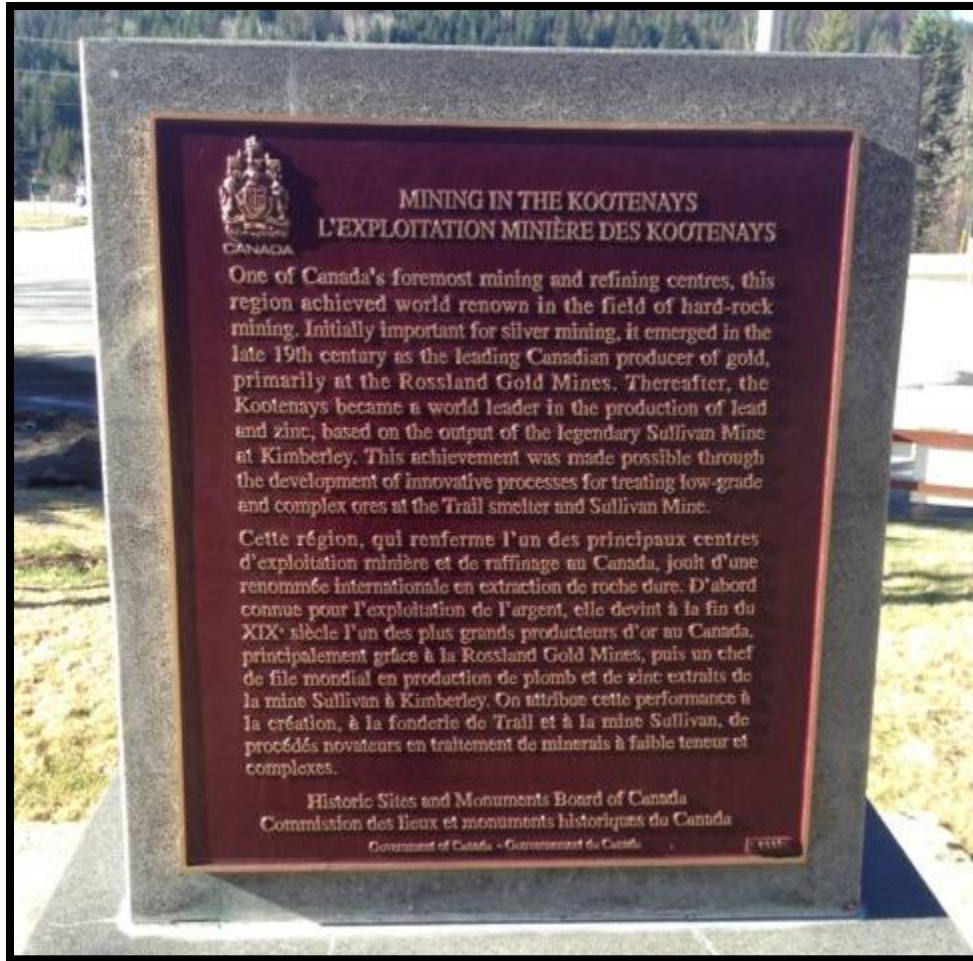
The Rossland mining camp consisted of dozens of mines and nearly 2,000 mineral claims; however, the Le Roi, Center Star, and War Eagle mines produced roughly 96% of all Rossland ore. These historic mines are the ancestral root of the mining culture and historic ambiance of Rossland. Many local street names, businesses, ski run names, performance art presentations, festivals and events pay homage to the historic mining heritage instilled by the mines of Rossland. Rossland has long been known as "the Golden City" for the riches extracted from the earth; and the motto on the City of Rossland's corporate seal is "THE MOUNTAINS OUR TREASURE".

**Character Defining Elements:**

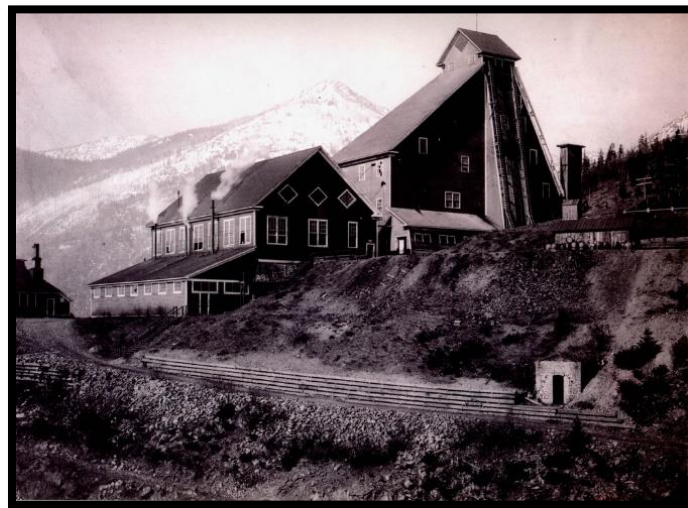
- Ore dumps
- Remaining railway beds
- Historic Site and Monument – Mining in the Kootenays



City of Rossland Corporate Seal



Historic Site and Monument - 2014



Le Roi Mine c. 1904